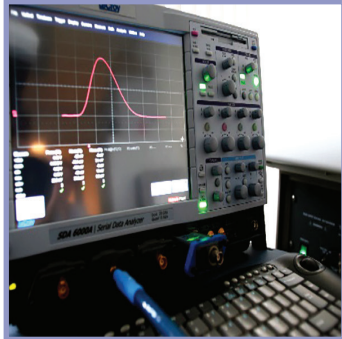


# ESD AND LATCH-UP TEST SERVICE

- ELECTRO STATIC DISCHARGE TESTING
- COMPONENTS AND SYSTEMS
- HBM – MM – CDM – ETGL MODELS
- ESDA – JEDEC – MIL – AEC – IEC STANDARDS
- LATCH-UP TESTING WITH DYNAMIC SETUP
- GATE LEAKAGE TESTING

## ESD AND LATCH-UP TEST SERVICE

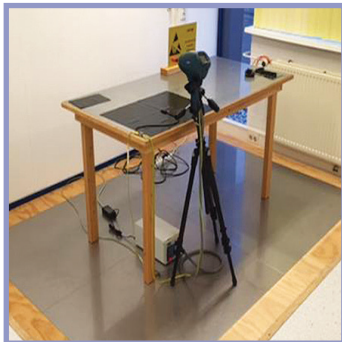
---



### ESD TESTING OF ELECTRONIC COMPONENTS

---

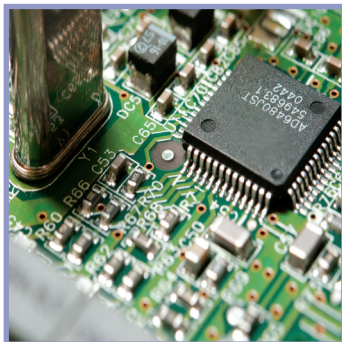
- ESD protection circuitry test of IC's and small modules
- HBM and MM testing up to 8kV on Mk.2 systems
- CDM testing up to 2kV on RCDM-3 systems
- Test according JEDEC/ESDA/Q100/MIL/IEC standards
- Scimitar™ software for test control and data processing



### ESD TESTING OF ELECTRONIC SYSTEMS

---

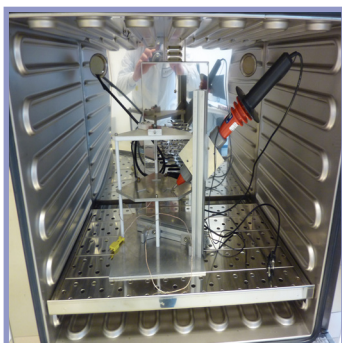
- ESD protection circuitry test of electronic systems
- Contact- and Field discharge up to 30kV with NSG-438
- ISO 10605 automotive range of discharge networks
- IEC 61000-4-2 networks including 330Ω/150pF
- Test according IEC 61000-4-2 & ISO 10605 standards
- Dedicated system setup and GND plates



### LATCH-UP TESTING OF INTEGRATED CIRCUITS

---

- Latch-Up phenomena sensitivity test of IC's
- Latch-Up testing with up to 5 V/I power supply domains
- 64k per pin vector memory and 512 pins on our Mk.2 systems
- Test according JEDEC-47- and Q100 standards up to +175°C
- Scimitar™ software for test control and data processing



### GATE LEAKAGE TESTING

---

- Testing according AEC-Q100-rev-G
- Thermally Induced Parasitic Gate Leakage Testing
- High voltage- and high temperature environment